

# Mulberry Village

831 Auburn Road (Hwy 324) at Fence Road | Dacula, Georgia | 30019



- 74,800 square foot neighborhood center anchored by Publix Super Market
- Serves affluent Dacula and Auburn markets
- Located in thriving Gwinnett County, one of Georgia's fastest growing counties
- Close proximity to Mall of Georgia, Hamilton Mill, Briscoe Field/Gwinnett Airport and Gwinnett Progress Center
- Excellent visibility from Highway 324/Auburn Road



DEMOGRAPHIC PROFILE

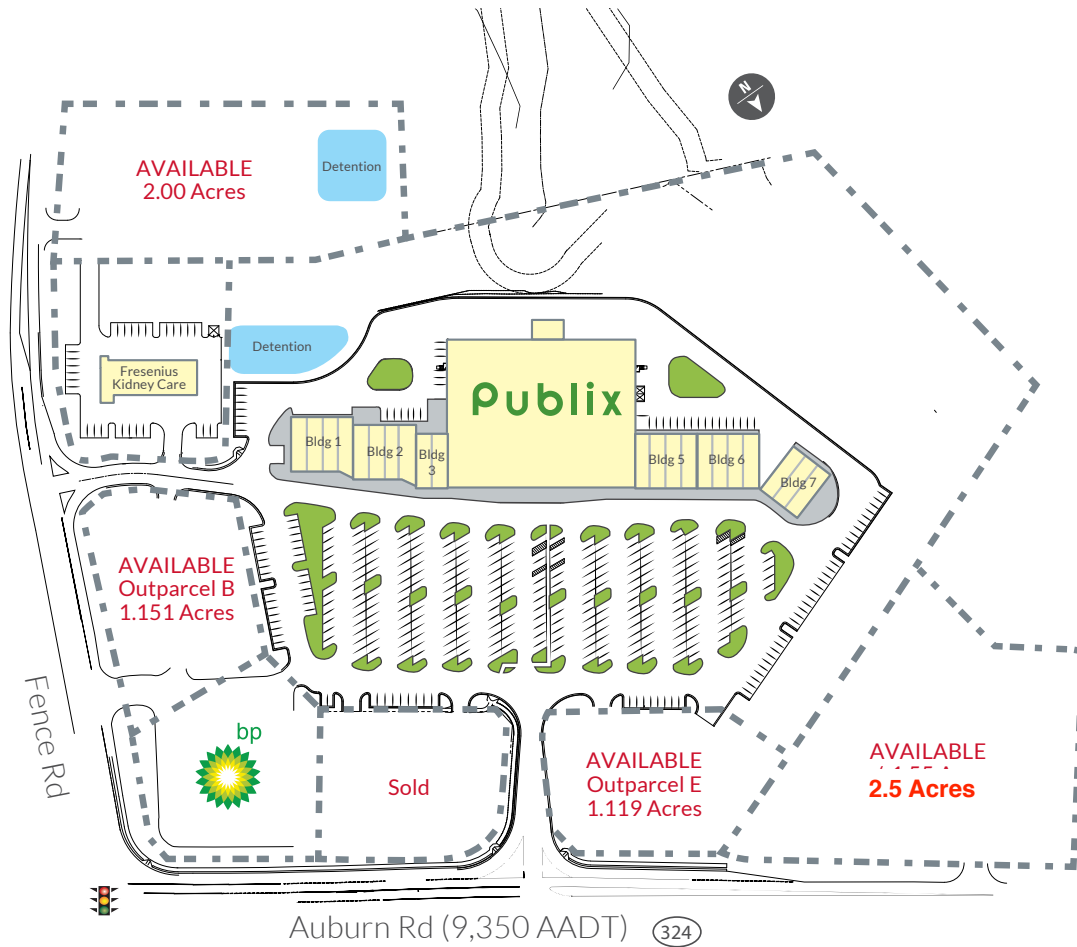


	1 mi	3 mi	5 mi
2020 Estimated Population	5,846	42,403	101,841
2025 Population Projection	6,083	44,452	107,060
2020 Estimated Households	1,792	12,945	31,464



	1 mi	3 mi	5 mi
2020 Average Household Income	\$118,968	\$124,980	\$111,364
2020 Median Household Income	\$101,149	\$104,430	\$94,642

# Mulberry Village

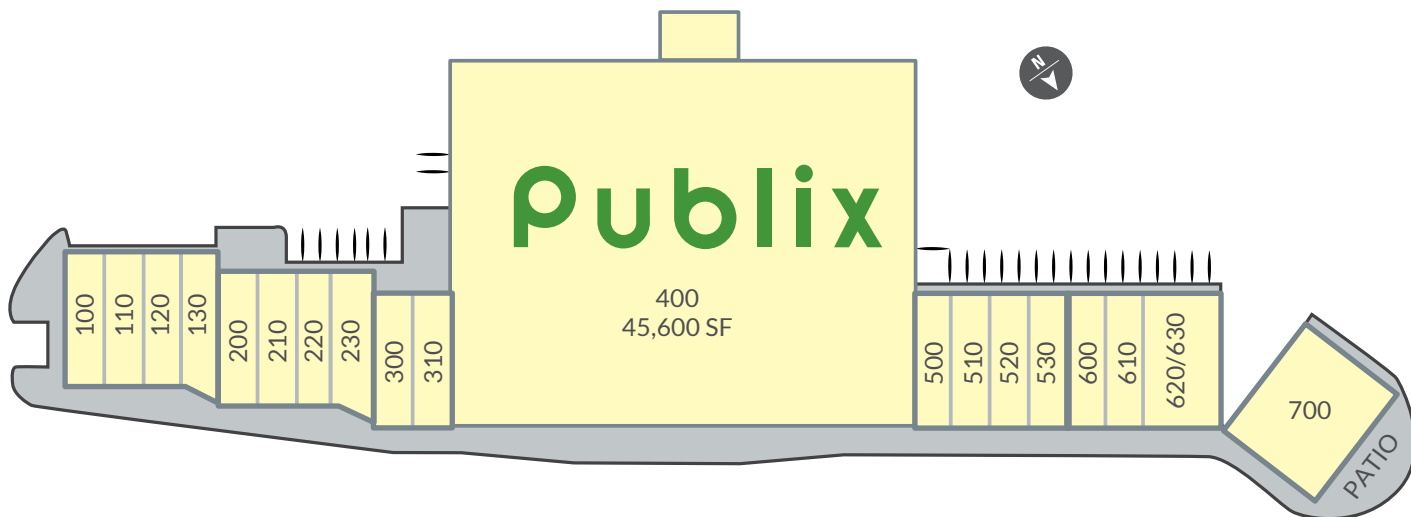


For More Information Call:  
 Angie Akins 678.725.1514  
 Rosemary Beck 404.229.9550

watkinsreg.com  
 1958 Monroe Drive NE  
 Atlanta | Georgia | 30324  
 404.872.8666



# Mulberry Village



SUITE #	SQ. FT.	STATUS
100	1,400 SF	AVAILABLE
110	1,400 SF	AVAILABLE
120	1,400 SF	AVAILABLE
130	1,500 SF	AVAILABLE
200	1,400 SF	9 Round Fitness
210	1,400 SF	AVAILABLE
220	1,200 SF	Dacula Hair Salon
230	1,700 SF	AVAILABLE
300	1,400 SF	My Green Pet Pals
310	1,400 SF	AVAILABLE
400	45,600 SF	Publix
500	1,400 SF	AVAILABLE
510	1,400 SF	AVAILABLE
520	1,400 SF	Capital Nails
530	1,400 SF	State Farm
600	1,400 SF	AVAILABLE
610	1,400 SF	Peking Chinese
620/630	2,800 SF	Groom And Board
700	4,200 SF	Maria's Tex Mex

For More Information Call:  
 Angie Akins 678.725.1514  
 Rosemary Beck 404.229.9550

[watkinsreg.com](http://watkinsreg.com)  
 1958 Monroe Drive NE  
 Atlanta | Georgia | 30324  
 404.872.8666

